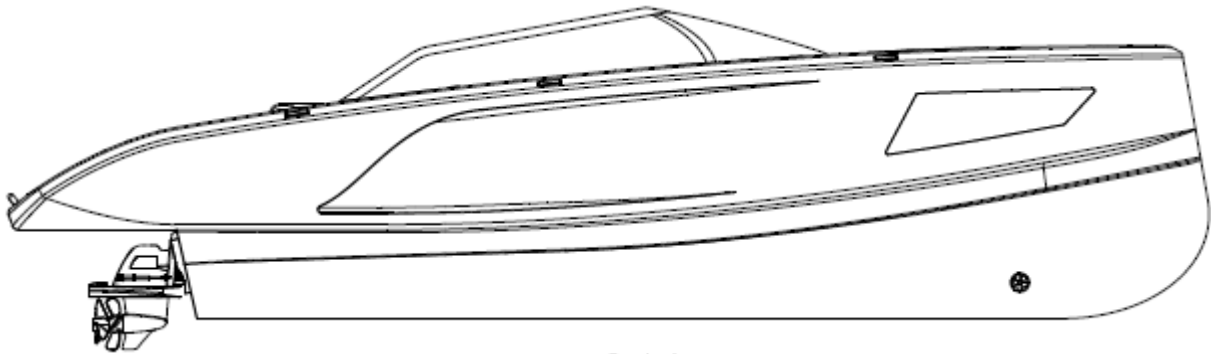


## 2021/22 Model Year specifications for Furyan F35 Eco Hybrid



### Principal Dimensions

<b>Length Overall:</b>	35'0" (10.66m)	<b>Fuel Capacity*:</b>	48 gallons (220 litres)
<b>Beam:</b>	10'7" (3.5m)	<b>Displacement (dry):</b>	5.5tonnes (5,500 kgs)
<b>Draught:</b>	2'4" (0.75m) unloaded	<b>Water capacity:</b>	48 gallons (220 litres)
<b>Berths:</b>	2 + 2	<b>Black waste:</b>	20 gallons (90 litres)
		*Range extender	

### E-Motors & Performance

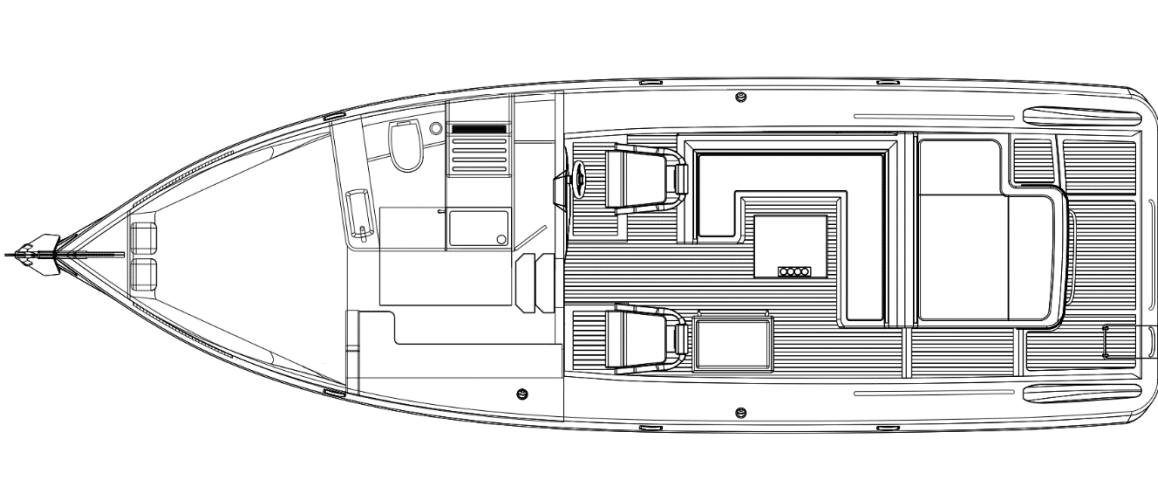
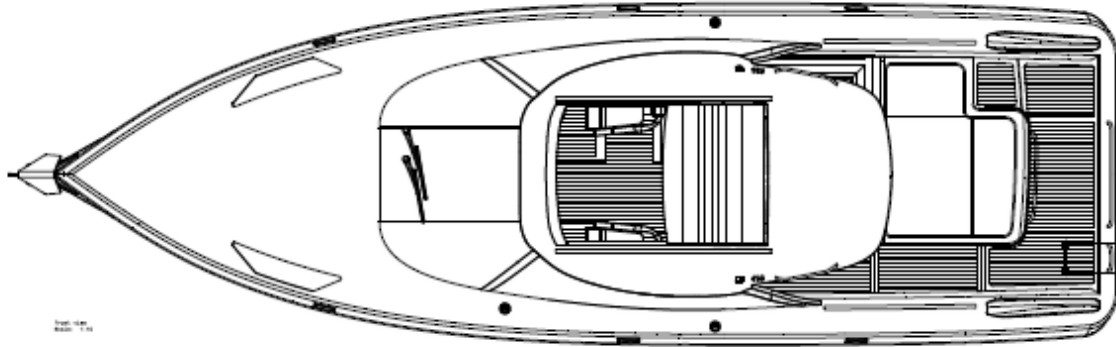
Serial hybrid system with the Cascade seamless power modulation and integrated 90kW (120hp) IC range extending with Axial Flux generator

2 x 200kW Axial Flux high power density electric motors (2 x 228bhp)

Type approval CE Category B      Speed 38 knots      Cruise 25 knots      Eco 12 knots

Max persons capacity: 8

## Main Deck



All items listed are standard specification except those marked \*

## Deck

- |   |   |
|---|---|
| Anchor retractable bow roller   | Anchor chain locker                               |
| Anchor chain (8mm x 30mm)   | Anchor winch (electric)                           |
| Anchor winch remote controls  | Controls for E-motor bay fire extinguisher system |
| Chain stopper (10mm)  | Self-stowing stainless steel (11kgs) Bruce Anchor |
| Bilge pump switches with integral operating warning lights and audible alarms, secondary independent system in Hi voltage battery compartment |   |
| Bilge pump high capacity emergency pump system  |   |
| Fuel filler (range extender)  | Moulded non slip deck surface                     |
| Hot and cold water handheld transom shower  |   |
| Mooring lines (6 x 2.5m)  | Fenders (x6) with quick locks                     |
| Navigation lights   | Rear access doors                                 |
| Recessed self-draining area on foredeck for sunbed cushions   |   |
| Toughened, single piece, curved glass windscreen  |   |
| Stainless steel pop-up cleats   | Horn  |
| Water filler  | Waste outlet                                      |



## Helm Position

Bow and stern thruster switch joysticks	Steering :- Adjustable steering wheel with
Zipwake trim tabs control panel	Optimus EPS, Electronic Helm, with Smart
Windscreen wipers (2)	Cylinder steering the sterndrive, via the Hydraulic
Screen demister/heater	Steering Pump
Display screen (2x12") Raymarine, Axiom and New Eagle E-Motor and battery control and full system monitoring	
Raymarine EV-200 Autopilot	
Electronic single-lever throttle and control modes	
Full E-Motor monitoring; on screen, including all digital, batteries, power management, range extender, all with audible alarms, E-Motor hour meters and sterndrive position indicator.	
Raymarine VHF marine radio	Single helm seats – adjustably for-aft
USB socket	Drinks holder
Compass	

## Electrical Systems

All 240V, 12V circuits with circuit protection	Electrical sockets
Heavy duty circuit breakers	Isolating switches to all batteries
<u>12Volt:</u>	<u>240 Volt:</u>
2 x batteries for domestic use	Polarity check & earth leakage protection system
1x battery for bow thruster	Regulated battery inverter/charger
Battery HV to LV crossover system	Shore power supply
<u>400/800 Volt:</u>	
High-capacity lithium battery system, BMS (Battery Management System) to prevent thermal runaway, battery packs are PCM Immersion liquid cooled using Shell Dielectric Standard: 3 x 63kWh battery packs, total 189kWh (upgrade 4 x 63kWh packs, total 252kWh)	
High voltage (HV) chargers connections for AC-DC and DC-DC fast charging	

## Cockpit

Audio unit with Bluetooth connectivity waterproof speakers (2 x 8")	
Bar unit with sink, cooking hob, fridge 65 litres and drawer fridge, 30 litres under helm seat	U-formed seating area, cockpit cushions, Silvertex, fill in table cushion (full size bed)
E-Motor bay access hatch	Electric height adjustable table
Forward and aft facing seating with fender stowage under and Integrated sunbed	
Manual bilge pumps	Moulded non-slip deck surface
LED lights to aft deck & steps	Stowage bins
Transom safety rails	Transom swim deck and ladder
Tonneau cover and Sliding sunroof (coupe)	USB socket

## Saloon

Access to head with companionway timber steps	Electrical distribution panel
'V' shape sofa double bed, with stowage lockers under bed	Fire extinguisher (manual)
LED ceiling lights	Sliding companionway door to cockpit
Large panorama side windows and deck sky light windows	Fusion Apollo RA770 Marine stereo
	Lockers (overhead) 2 x half height hanging lockers and stowage draws

## Hull form and Construction

Wave piercing bow, deep "V" hull design by Furyan CFD and Petestep Naval Architects with Petestep deflector design.  
 Design, layout and detailing by Furyan Yacht Design Studio  
 Moulded side intake transom exit spray deflectors  
 Resin prepreg Bio resin Flax with Nomex core for the hull & internal liner, transverse & longitudinal strengthening pre-moulded stringers throughout hull and integrally moulded engine bearers.  
 Hull and deck colours to customer specification\*  
 Antifoul protected hull wrap\*

## Head

Automatic shower tray pump-out system	Electric silent-flush freshwater toilet
Full set of bathroom fittings	Mirrored cabinet doors
Separate full standing-height shower with adjustable shower head	
Vanity unit locker and basin with hot and cold pressurised water	

## Engines and Sterndrive

Automatic engine bay fire extinguisher system and HV battery compartment	
Seacocks on all inlets/outlets below the waterline	
Zipwake trim tabs	Stern thrusters
E-motor, battery pack and range extender	Heat exchanger cooling system

## Fuel System

Emergency fuel shut-off valves for range extender IC engine	
Water separators and fuel filters	Single fuel tank (220 litres)

## Freshwater System

Automatic, pressurised supply	Isotemp Tubby 40 Litres = 8.8 Gallons
Water tank (220 litres)	Water heater

## Black Waste

Holding tank (90 litres)	Macerator pump
--------------------------	----------------



# FURYAN™

MARINE TECHNOLOGY



All items listed are standard specification except those marked \*

## For further information

Visit [www.furyanmarinetechology.com](http://www.furyanmarinetechology.com)

Call 02381 849 807

Whilst every effort is made to keep all sales literature up to date, it should not be regarded as an infallible statement of current specifications and does not constitute an offer for the sale of any particular boat. We have a policy of continuous improvement and reserve the right to make alterations and upgrades to designs specifications without notice. Appointed dealers and sales representatives are not agents of Furyan Marine Technology Ltd and are not authorised to commit Furyan Marine Technology Ltd by any express or implied undertaking or representation. Performance estimates are given in good faith but are in no way guaranteed. A range of factors can affect performance including dirt on the bottom of the boat, damage to the propellers, external water and air temperatures, the weight of the crew, fuel and water carried can all affect performance.



# FURYAN™

MARINE TECHNOLOGY



We design and manufacture eco hybrid motor cruisers in the UK,  
supplying hybrid and electric propulsion systems and consultancy services on sustainable manufacturing